

students who were accepted at its inception from the 20<sup>th</sup>-percentile—and worse—to the 70<sup>th</sup>, 80<sup>th</sup> and, in some cases, the 90<sup>th</sup>-percentile, consistently meeting or exceeding state Department of Education goals. Graduates have received more than \$1 million in scholarships to prominent private high schools such as the Baldwin School, Choate-Rosemary Hall and the Agnes Irwin School or routinely attend highly competitive, criteria-based public schools such as Central, Girls High, CAPA and GAMP.

All it takes is a visit to the facility to be blown decades back to an era Corosanite remembers fondly, when public schools offered comprehensive art and music as a matter of course.

The school building itself, once a Food Fair supermarket, may not be much to look at from the outside. “But when people come inside,” Corosanite says, “they say it’s magic.” \*

## Addicted to Life

(→continued from page 30)

His girlfriend moved from Philadelphia to be near him while he was in recovery. Before long, friends from the neighborhood started showing up in search of treatment for their own addictions.

Things were seemingly on track. He and his girlfriend got engaged and had a baby girl. And he was clean and sober for three years and counting. Then misfortune reared its ugly head. His fiancé’s father was sick. For Donatucci, moving back to Philadelphia was the right thing to do.

“You always have ‘nevers’ – things you’ll ‘never’ do again....and then you wind up doing it again,” Donatucci said. Depression set in and he fell back into his old habits. He ended up right back where he started three years prior.

Once again, Frank Donatucci made a commitment to better himself. After a short stint in a New Jersey rehab, he relapsed. He knew he had to go back to Florida. Only this time, it was harder. He had a wife, child and had just purchased a house that he was fixing up. But he knew he was a “product of his environment.” The Frank in Philadelphia was no comparison to the one in Florida, he explained.

He booked a flight and headed back to halfway in the Sunshine State. He wound up doing so well with his recovery that a staff member he met his first time around recommended him for a job in a nearby treatment center.

Today, Frank Donatucci is the Director of Admissions at the Florida House Experience, a 170-bed campus-style facility in Deerfield Beach that offers residential, intensive outpatient and transitional living. Frank lives in nearby Boca Raton with his wife, daughter and son.

Through his work and treatment, he said he has become a better son, husband, father, friend and employee. Sober now for three years, Donatucci knows “relapse is not a requirement.” And ‘second chances’ are a good thing.

“Hope is in others when you don’t see it in yourself,” he said. \*

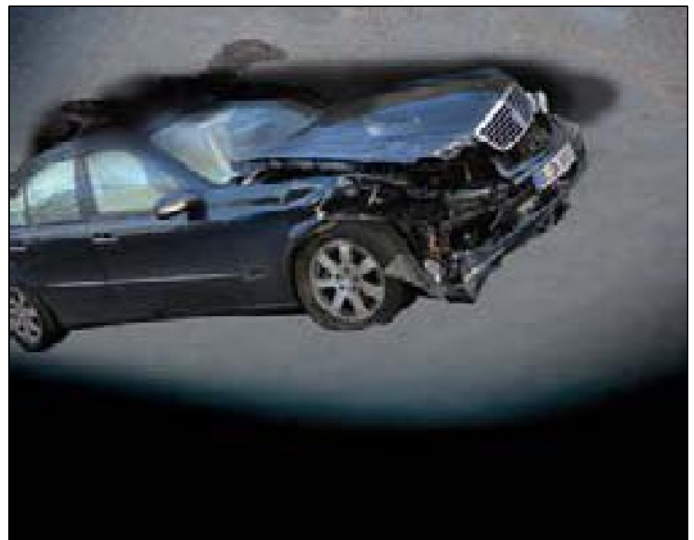
*For more information, contact Frank Donatucci at the Florida House Experience, 888.421.6242 or log onto [www.floridahouseexperience.com](http://www.floridahouseexperience.com).*

Since 1983  
**CUSTOM FABRICATION**  
**STEEL DOORS**  
 INCORPORATED

HENRY DEL CONTE  
 President

Republic  
 Doors • Frames • Hardware  
 Toilet Partitions

701 WASHINGTON AVENUE • PHILADELPHIA, PA 19147  
 215-592-0202 FAX 215-592-9640



ALL WORK GUARANTEED  
 FAX - 215-334-1454  
 215-334-5220  
 2008 S. 9TH ST. PHILADELPHIA, PA 19148

A U T O R E P A I R S  
**D'AMARIO'S**